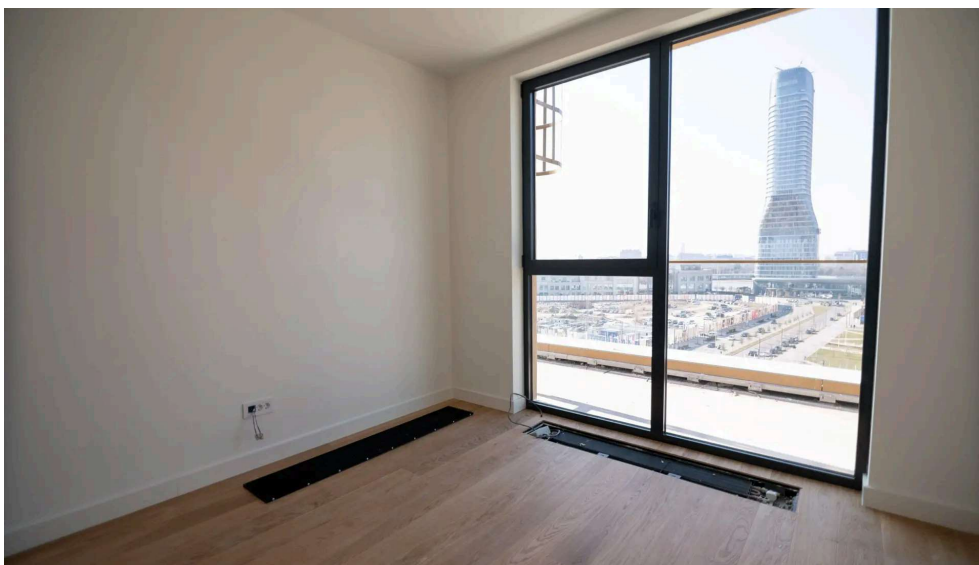


BW Quartet, 4 bedroom penthouse with private rooftop

Savska, Belgrade 11000, Serbia





4 bedrooms

3 bathroom

276 m2

Description

Located in the heart of Belgrade Waterfront, near the Palace of Justice and Sava Park, this impressive penthouse offers the perfect blend of modern design, comfort, and prestige. With a total area of 276.16 m², of which 210 m² is officially registered, this property provides numerous advantages, including optimized monthly maintenance costs and property tax calculations based on the registered square footage. The apartment features a spacious living room with a dining area and panoramic views of the Belgrade Tower, four elegantly designed bedrooms, three modern bathrooms, and an additional guest toilet. Four terraces offer breathtaking views and an abundance of natural light, while a completely private rooftop access—excluded from the registered square footage—allows owners additional space for customization according to their preferences. Residents benefit from a 24/7 reception and security service, a landscaped inner courtyard, a children's playground, as well as a variety of cafés, restaurants, and shops within the complex. The prime location is just a few minutes' walk from Sava Promenade, Belgrade Tower, Galerija Belgrade, and the vibrant Savamala district. Up to three parking spaces are available for purchase, at a price of €25,000 per space. This exceptional property is an ideal choice for those seeking a luxurious and sophisticated living experience in one of Belgrade's most prestigious areas.

Details

Price per m2	3786.23
Furnishing	Semi-Furnished
Parking	3