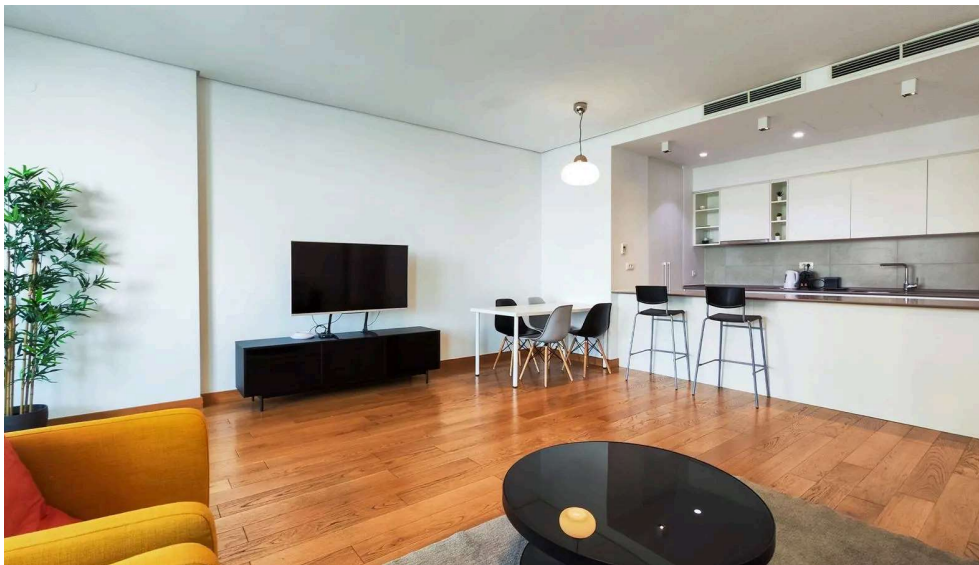
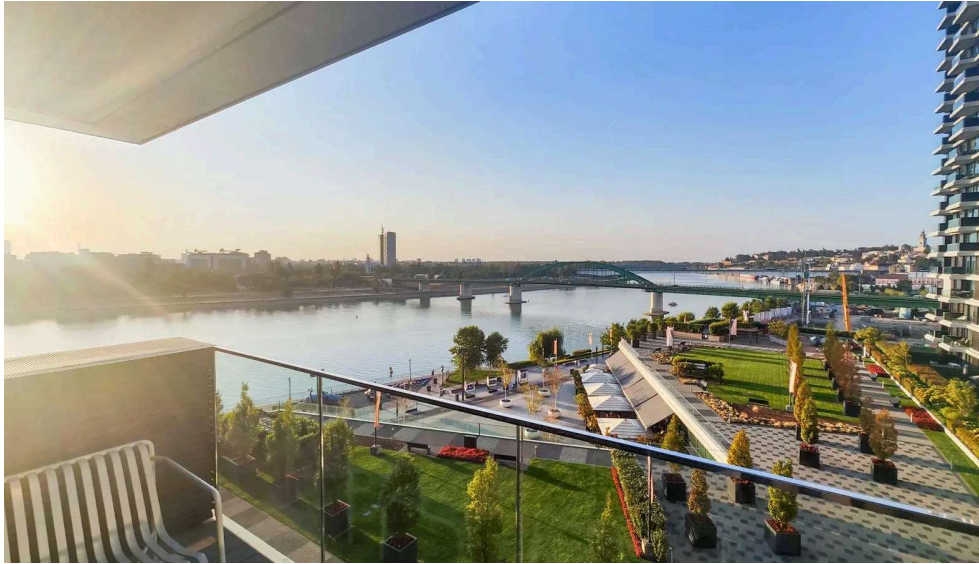
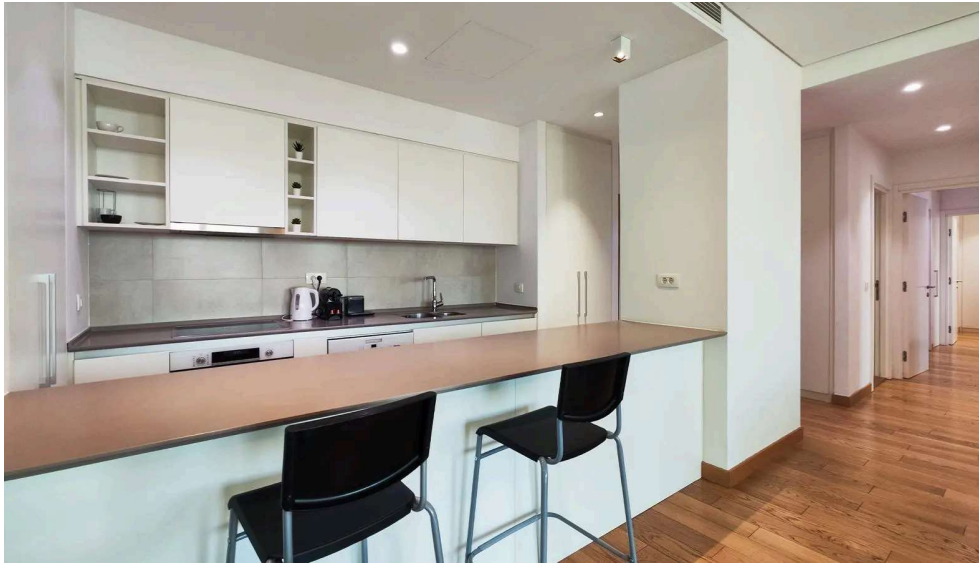


Belgrade Watarfront – Residences

Hercegovačka, Belgrade 11000, Serbia





3 bedrooms

2 bathroom

125 m2

Description

Located in the most sought-after area of Belgrade Waterfront, this stunning 3-bedroom apartment offers a breathtaking direct view of the Sava River. Situated in the prestigious Residences building, right on the waterfront, the property provides exclusive amenities, including a gym, swimming pool, and 24/7 reception services. Enjoy living in one of the finest and most desirable locations in the city, with top-tier facilities and unparalleled comfort. The price of the parking space is 40,000 EUR.

Gym

Indoor Pool

Reception

Details

Price per m2	7724.00
Floor	5 / 20

Furnishing	Fully-Furnished
Parking	1